

# Veterans Way Business Park

14419 Veterans Way  
Moreno Valley, CA



## WAREHOUSE SPACE

±13,741SF

with ±1,161 SF  
of office space

## ACCESS

5 min

to CA hwy 60 with easy access  
to CA hwy 215

## CLEAR HEIGHT

22'

with 14'  
ground level doors

## PARKING AREA

30

surface spaces, ratio of  
2.18/1,000 SF

## Freestanding warehouse/mfg. building for sale, serving Riverside and Moreno Valley

Two (2) 12 ft. by 14 ft. Ground Level Doors

Access from two main streets

One (1) 9 ft. by 10 ft. Dock High Position

Close to City Hall and police department

400 amps, 277/480 volts electrical service

Zoning BP

.33 GPM/3000 sprinklers

### Contact Information

#### Gerry Harvey

Senior Vice President

909.764.6509

gharvey@kiddermathews.com

LIC # 00428295

[kiddermathews.com](http://kiddermathews.com)

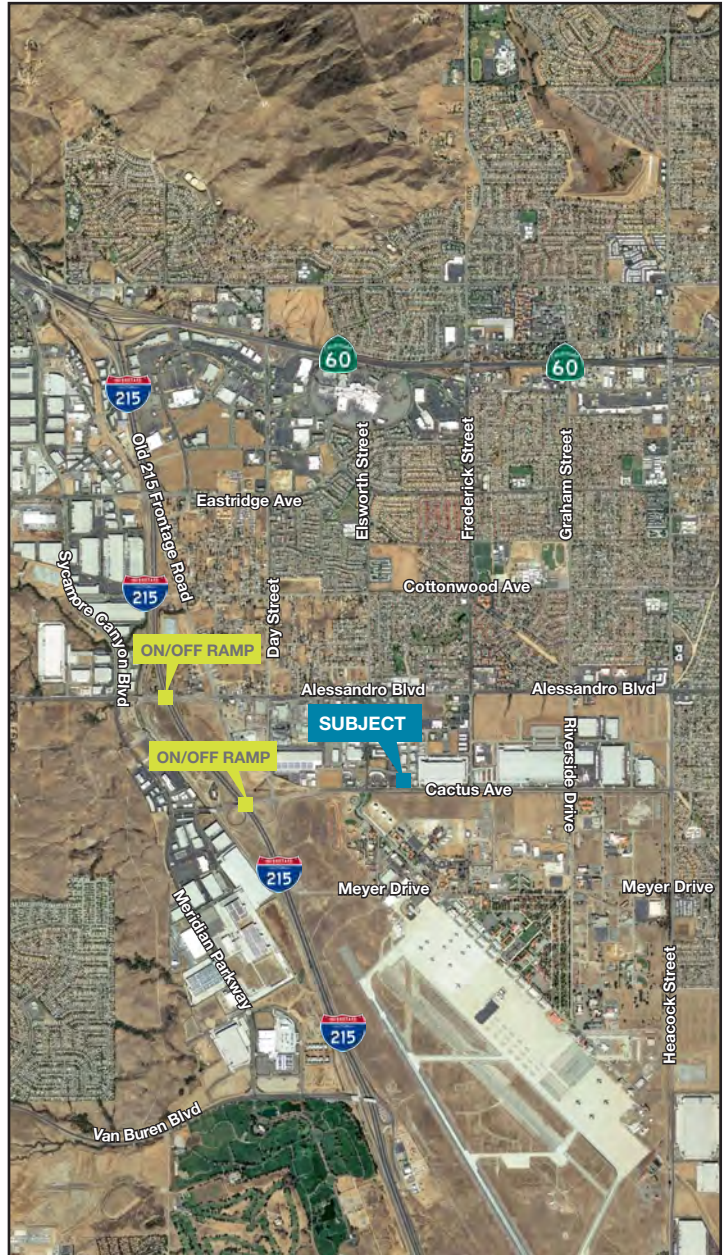
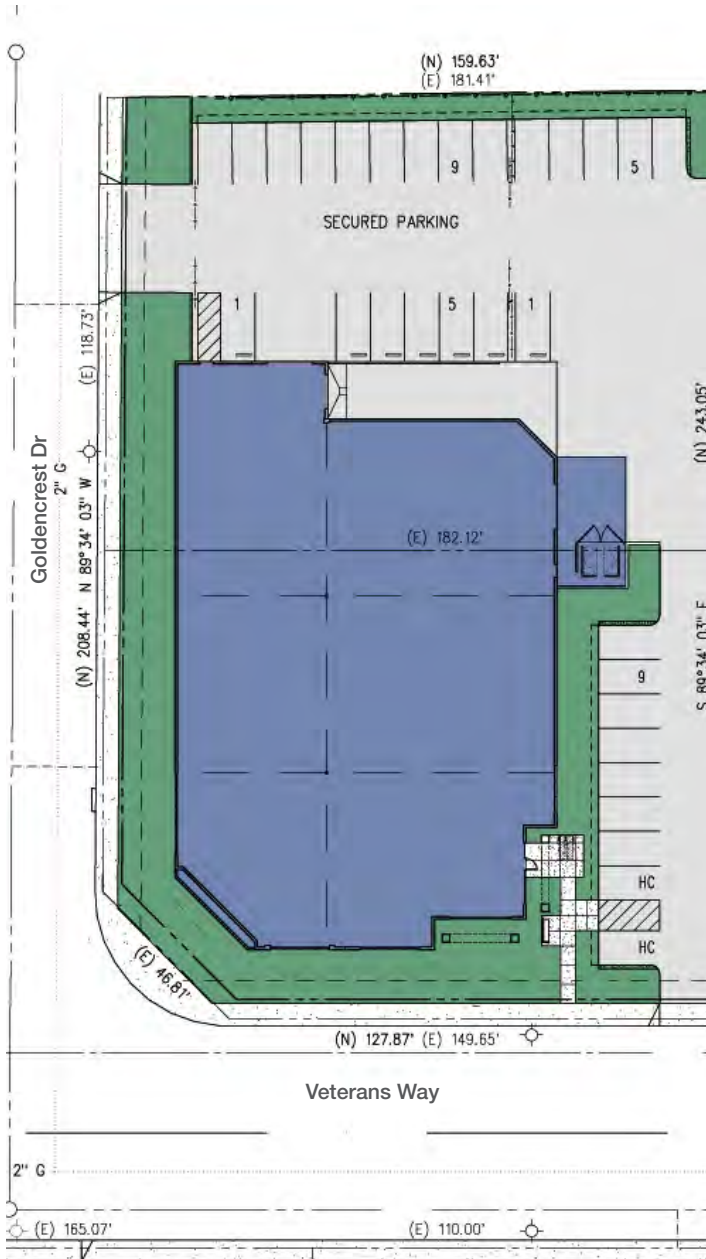
This information supplied herein is from sources we deem reliable. It is provided without any representation, warranty or guarantee, expressed or implied as to its accuracy. Prospective Buyer or Tenant should conduct an independent investigation and verification of all matters deemed to be material, including, but not limited to, statements of income and expenses. Consult your attorney, accountant, or other professional advisor.



# Veterans Way Business Park

14419 Veterans Way  
Moreno Valley, CA

## Site Plan & Area Map



## Contact Information

**Gerry Harvey**  
Senior Vice President  
909.764.6509  
gharvey@kiddermathews.com  
LIC # 00428295

[kiddermathews.com](http://kiddermathews.com)