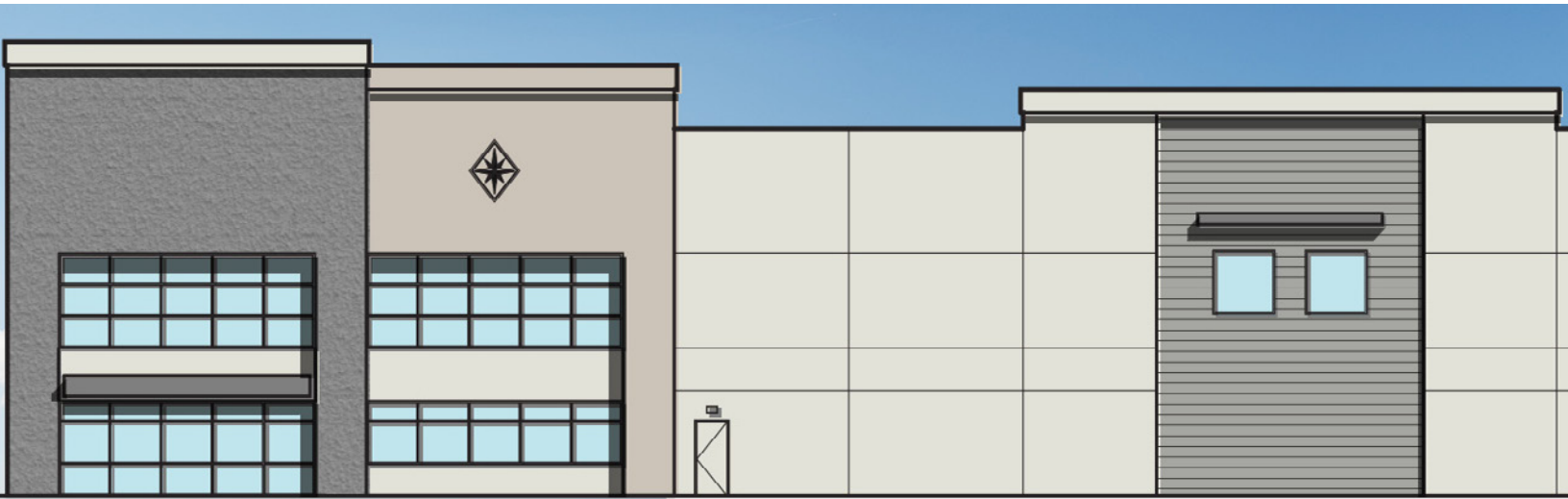


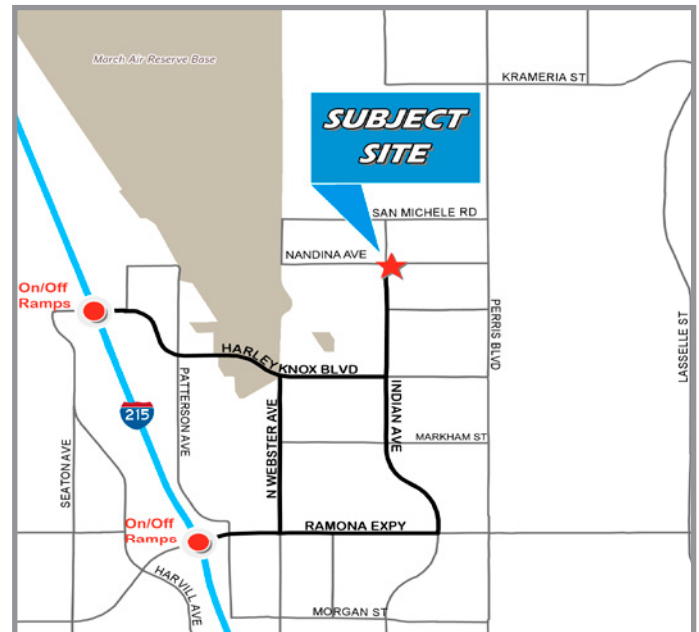
Available | +/- 98,395 SF State of the Art Industrial Building



Property Features

- > +/- 98,395 SF Industrial Warehouse
- > Parked for 8,000 SF of Office Area
- > ESFR K25 Sprinkler System
- > 9 Dock High Doors and 2 Grade Level Doors
- > 30' Warehouse Clearance Height
- > Can be Demised to Accommodate Two Tenants
- > Secured Concrete Truck Court with 9 Trailer Stalls
- > 1200 Amps of Power
- > Easy I-215 & 60 Freeway Access
- > Corporate Neighbors Include: Amazon, Ross Stores, Harman Kardon, Home Depot, Lowes Home Improvement, Philips Lighting, Walgreens, Hanesbrands, Harbor Freight Tools, Deckers, Whirlpool and Karma Automotive

Locator Map



IAN DEVRIES | 949.724.5509
Executive Vice President
ian.devries@colliers.com
DRE# 01019868

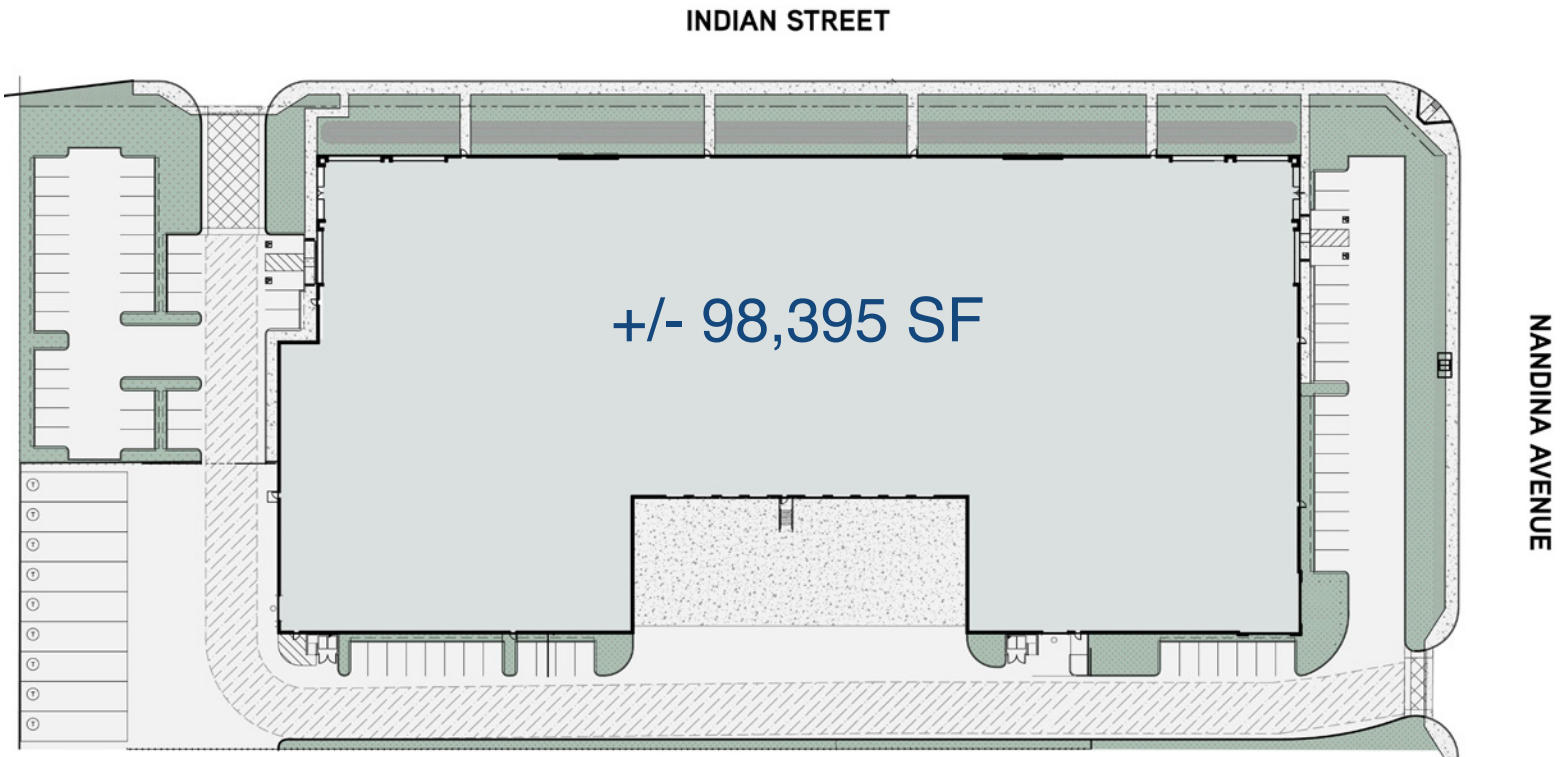
CHRIS DEVRIES | 949.724.5504
Senior Associate
chris.devries@colliers.com
DRE# 01867314



Available | Moreno Valley, CA
+/- 98,395 SF Industrial Warehouse



Scheme | Proposed Building



DRIVING DISTANCES FROM SITE

I-215 Freeway	1.4 miles
Highway 60	5 miles
I-10 Freeway	20 miles
Ontario Int'l Airport	30 miles
Port of Long Beach	72 miles

DIRECTIONS TO SITE

From I-215, take Harley Knox Boulevard exit and go east to Indian Avenue. Head north on Indian. The Property is located at the southeast corner of Indian Avenue and Nandina Avenue.

Colliers International makes no guarantees, representations or warranties of any kind, expressed or implied, regarding the information including, but not limited to, warranties of content, accuracy and reliability. This publication is the copyrighted property of Colliers International and /or its licensor(s). 2018. All rights reserved.



IAN DEVRIES | 949.724.5509
Executive Vice President
ian.devries@colliers.com
DRE# 01019868

CHRIS DEVRIES | 949.724.5504
Senior Associate
chris.devries@colliers.com
DRE# 01867314



IAN DEVRIES | 949.724.5509
 Executive Vice President
 ian.devries@colliers.com
 DRE# 01019868

CHRIS DEVRIES | 949.724.5504
 Senior Associate
 chris.devries@colliers.com
 DRE# 01867314